

CERTIFICATE OF LOCATION OF GOVERNMENT CORNER

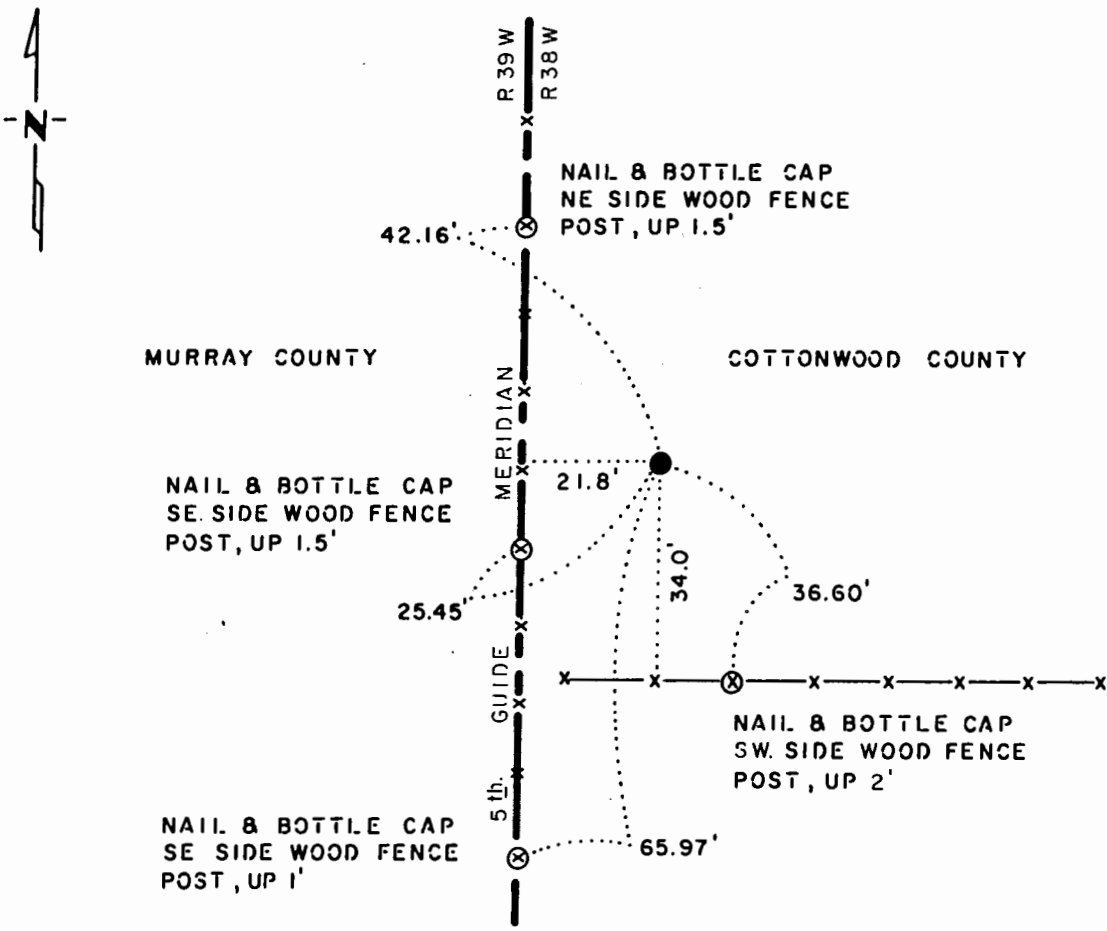
EAST QUARTER Corner of Section 1, Township 105 N, Range 39 W, 5th P.M.

STATE OF MINNESOTA, County of MURRAY

At the corner location shown on the sketch:

- On 1-21-76 found a 1 1/2" x 2 1/2" IRON BAR, DOWN 1.0'
DATE
- left monument as found, lowered monument, removed monument (explain)
- On _____ placed a _____
DATE

SKETCH OF REFERENCE TIES



Statement of evidence relative to this corner location is on back of page.

J. B. M. 3-22-85
G-158

I hereby certify that this document and the data contained herein was prepared by me or under my direct supervision.

Bruce W. Sheppard
SIGNATURE

12/20/85
DATE

Registration No. 17003

- Land Surveyor, Professional Engineer
- County Surveyor, County Engineer

OFFICE OF THE COUNTY RECORDER

County of _____

I hereby certify that this document was filed in the Co. Recorders office at _____ .M. on the _____ day of _____ A.D., 19 _____

County Recorder _____

By _____, Deputy

DOCUMENT NO. _____

East Quarter Corner Section 1, Township 105 North, Range 39 West

This corner was originally established by the U. S. General Land Office survey in 1857. The government notes show:

set quarter post, deposited charcoal, made mound, trench, and pits and planted plum seed northeast and southwest

In October 1975, the DNR Bureau of Engineering contacted the following for corner information:

Cottonwood County Offices of the Recorder and Highway Engineer
Murray County Offices of the Recorder and Highway Engineer
Sioux Engineering of Windom

The following information was obtained from the Cottonwood County Recorder's Office:

Plat 49 contains a resurvey of Township 105 North, Range 38 West done by C. W. Gove, County Surveyor, in 1898. Plat shows that corner was established:

2641.25 feet from the northeast corner of Section 1

2641.25 feet from the southeast corner of Section 1

A 1½" by 2½" by 30" cast iron stake was set to mark this location.

In January 1976, the DNR Bureau of Engineering traversed to the area of the corner and found a 1½" by 2½" iron bar. The iron bar was found to be:

2643.80 feet from the northeast corner of Section 1

2638.58 feet from the southeast corner of Section 1

Accept the iron bar as the location of the corner.

Traverse information is available from the DNR Bureau of Engineering.

80hab